

Helping to improve
the **survivorship** of
orthopaedic implants

**Summit Medical
Pulsed Lavage Product Guide**



We keep patients moving

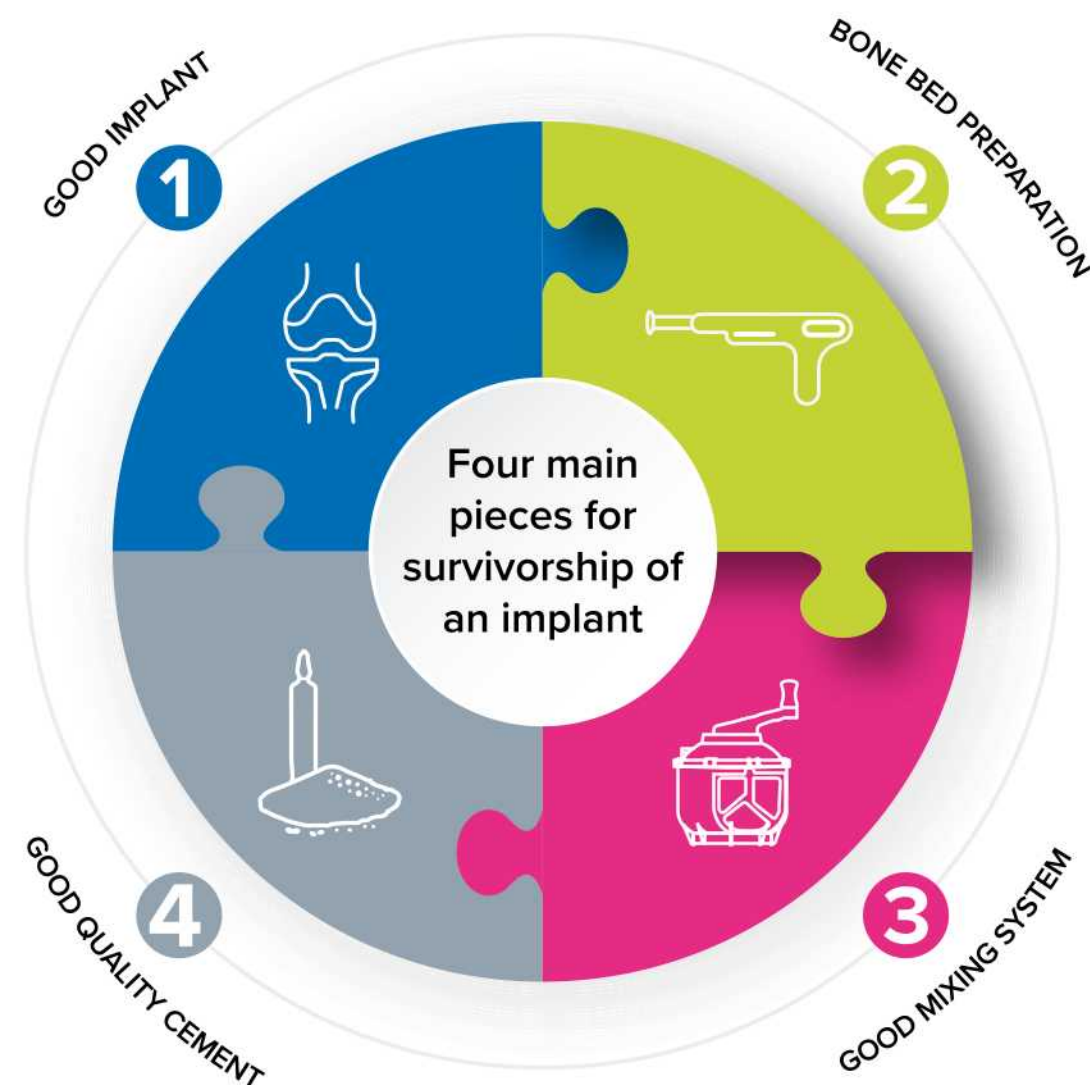
As a trusted orthopaedic surgical partner to the top global orthopaedic leaders, we instil confidence and offer simplicity to healthcare professionals treating complex clinical challenges.

Through decades of research and development, our products are a preferred choice for orthopaedic surgeons globally.



What is needed for implant survivorship and wound debridement?

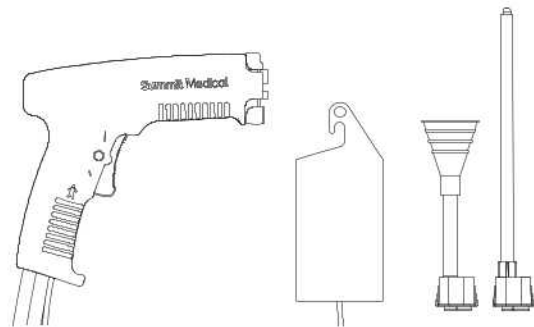
Our single-use high pressure Pulsed Lavage system effectively cleans bone and removes debris during total joint procedures, increasing cement penetration into the cancellous bone for potentially stronger implant fixation and reduced revision rates. It is also an effective mechanical debridement system for cleaning wounds, removing dirt, necrotic tissue and debris^{1, 2, 3, 4, 5, 6, 7}.



Anatomy of the Pulsed Lavage



Product Ordering Information

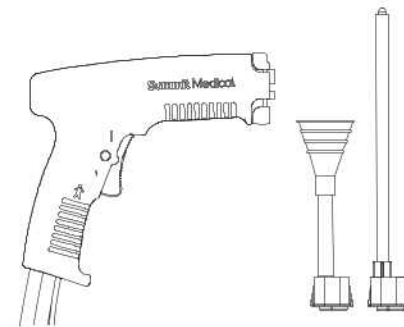


Pulsed Lavage with External Battery Pack

Fan Spray Nozzle and Long Nozzle

WZ-WDS-01

QTY/BOX 10

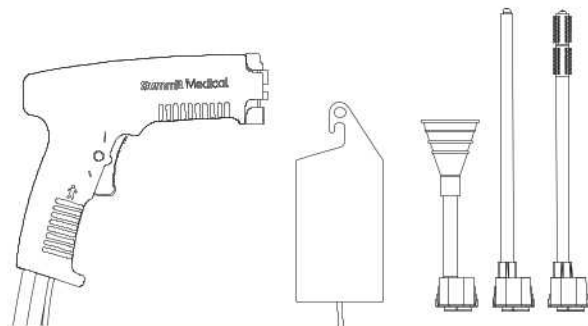


Pulsed Lavage with Built-In Battery Pack

Fan Spray Nozzle and Long Nozzle

WZ-WPL-01

QTY/BOX 10



Pulsed Lavage with External Battery Pack

Fan Spray Nozzle, Long Nozzle and Femoral Brush Tip

WZ-WDS-07

QTY/BOX 10



Single Packed Sterile Femoral Brush Tip

WZ-PT-03

QTY/BOX 10

REF. 1: Helmers S, Sharkey PF, McGuigan FX. Efficacy of irrigation for removal of particulate debris after cemented total knee arthroplasty. J Arthroplasty. 1999;14(5):549–557. 1-s2.0-S088354039990075X-main

REF. 2: Böhner M, Giesinger K, Müller DA, Leiss F, Clauss M. Pulsatile lavage systems with high impact pressure and high flow produce cleaner cancellous bone prior to cementation in cemented arthroplasty. Clin Orthop Relat Res. 2014;472(10):3164–3171.

REF. 3: Clarius M, Seeger JB, Jaeger S, Mohr G, Bitsch RG. The importance of pulsed lavage on interface temperature and ligament tension force in cemented unicompartmental knee arthroplasty. Clin Biomech. 2012;27:372–376. 1-s2.0-S0268003311002646-main

REF. 4: Schlegel U, Jäger M, Lüring C, Tingart M. Pulsed lavage improves fixation strength of cemented tibial components. Int Orthop. 2011;35(8):1165–1169. SP100110EN_0523_3_Schlegel 2011

REF. 5: Knopp W, Bitsch RG, Clarius M, Ettinger M, Jaeger S, Kretzer JP. Pulsed lavage reduces the incidence of radiolucent lines under the tibial tray of Oxford unicompartmental knee arthroplasty: Pulsed lavage versus syringe lavage. J Arthroplasty. 2016;31(9):2001–2006.

REF. 6: Clarius M, Seeger JB, Jaeger S, Mohr G, Bitsch RG. Pulsed lavage increases cement penetration in unicompartmental knee arthroplasty without raising interface temperatures. Clinical Biomechanics. 2012.

REF. 7: Summary document citing: Schlegel U, Jäger M, Lüring C, Tingart M. Pulsed lavage improves fixation strength of cemented tibial components. Int Orthop. 2011;35(8):1165–1169.



Here at Summit Medical, we believe in being responsive to the needs of our customers and business partners, in the ever changing dynamic market place.

That is why we are always listening to feedback, to allow us to be flexible and adaptable, so we can stay one step ahead of the competition and offer the best in class solutions for the most important customers... the patients!

Founded in 1984, Summit Medical Group Ltd is a global leader in the provision of quality medical products, trusted by clinicians, physicians, hospitals and patients; manufactured in the UK, with a commitment to innovation, service and quality.

Summit Medical utilises highly skilled and advanced manufacturing techniques that meet the changing demands in global healthcare.

“ It is not the strongest of the species that survives, nor the most intelligent. It is the one most adaptable to change. ”

- Charles Darwin

Summit Medical Group Limited

Bourton Industrial Park
Bourton on the Water
Gloucestershire
GL54 2HQ
United Kingdom

Tel: +44 (0)1451 821311

Email: info@summit-medical.co.uk

www.summit-medical.co.uk

Distributed by:

