

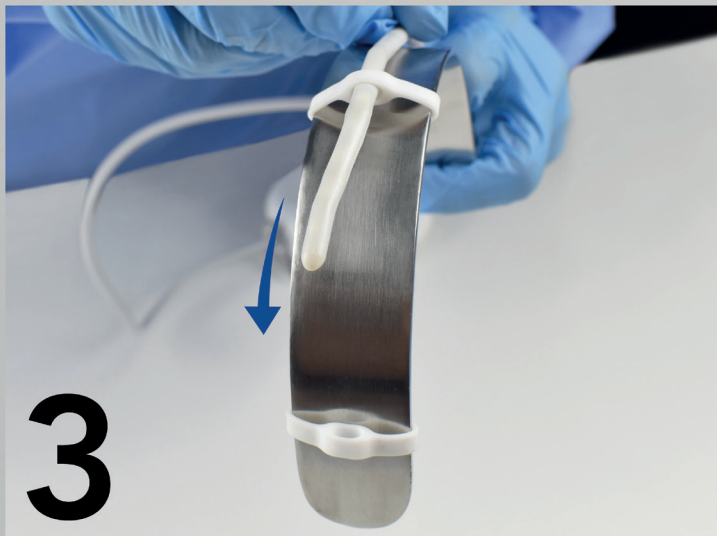
# LARGE RETRACTOR ATTACHMENT GUIDE



**1. Secure** the retractor loop around the retractor by stretching the central loop. Repeat with second retractor loop.



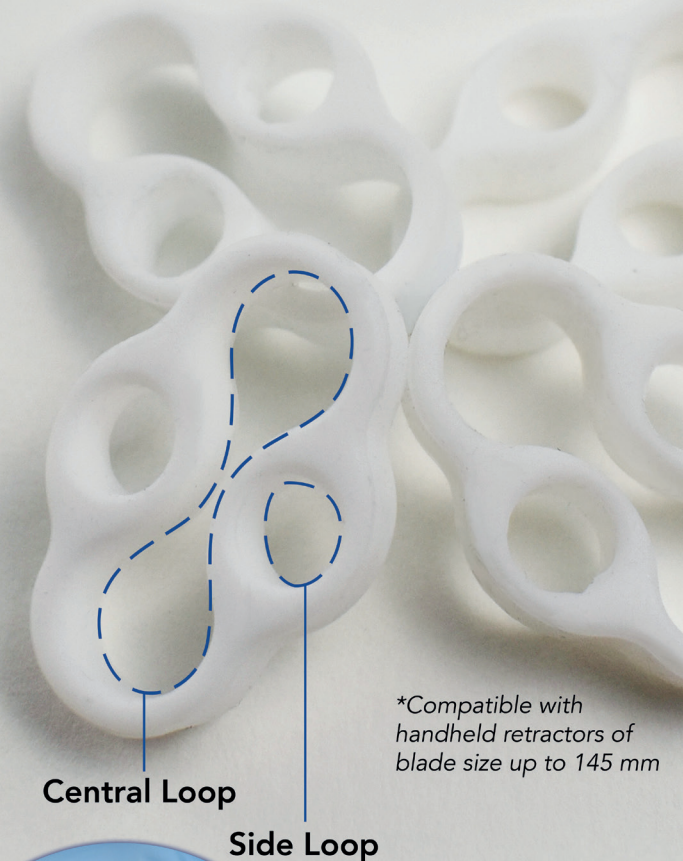
**2. Adjust** both retractor loops to allow sufficient space in-between them.



**3. Mount** the KLARO™ light strip onto the retractor using the side loop of the two retractor loops.



**4. Bend** the KLARO™ light strip around the tip of the retractor.



*\*Compatible with handheld retractors of blade size up to 145 mm*



**Switch** KLARO™ on by pushing the blue button. Increase the lighting intensity by repeatedly pushing the blue button (up to 4 intensities available).